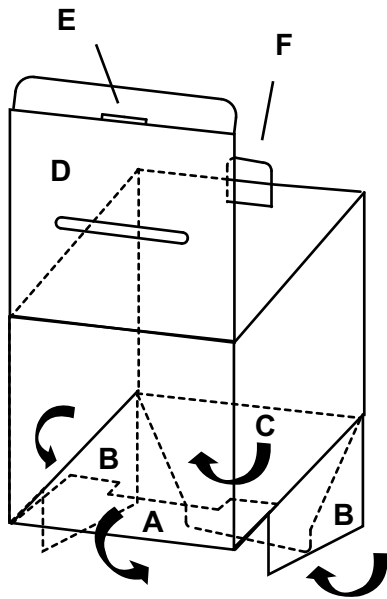
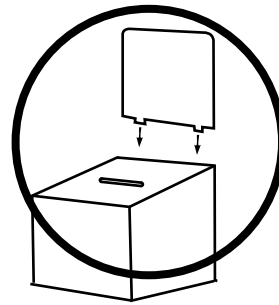


Assembly Instructions



1 Square up counter display and fold bottom flap (A) under display. Then fold side bottom flaps (B) over (A). Push flap (C) onto (A & B) until it snaps through and locks bottom. Fold over top panel (D) and lock (F) into (E).

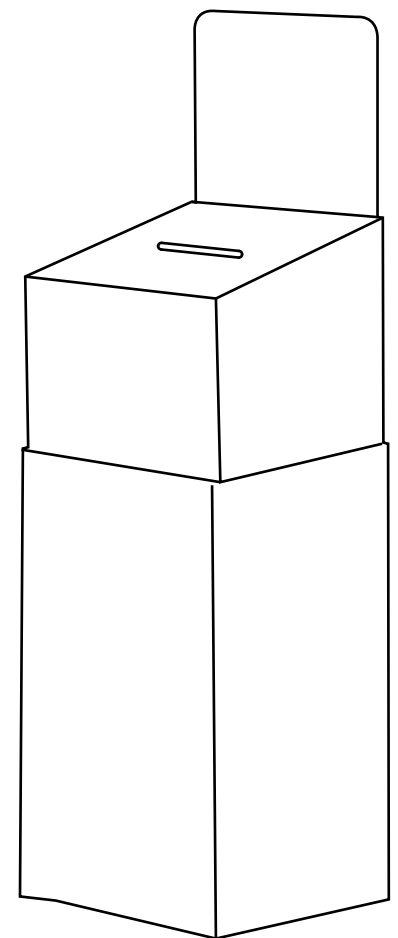
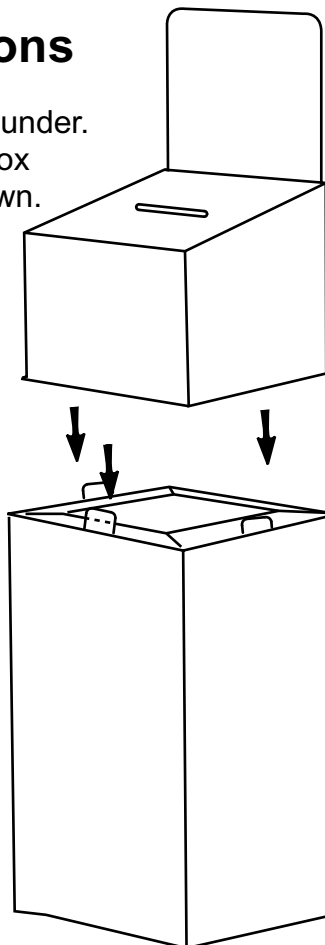
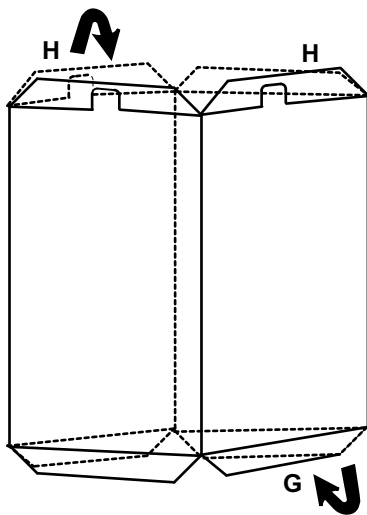


2 Place header into top slots.

YOUR FINISHED BALLOT BOX

Base Display Instructions

1 Pop open base and fold (G) flaps under. Fold (H) flaps over. Place Ballot Box onto base and lock tabs in as shown.



YOUR FINISHED DISPLAY